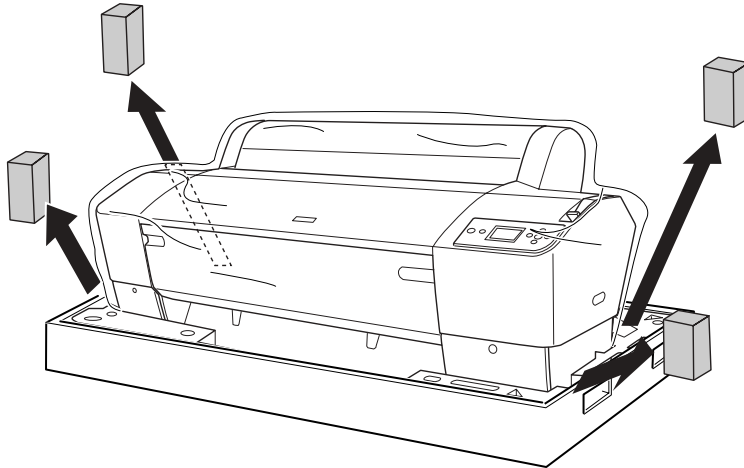


NOTICE SHEET

About Unpacking and Assembling EPSON Stylus Pro 7800/7400

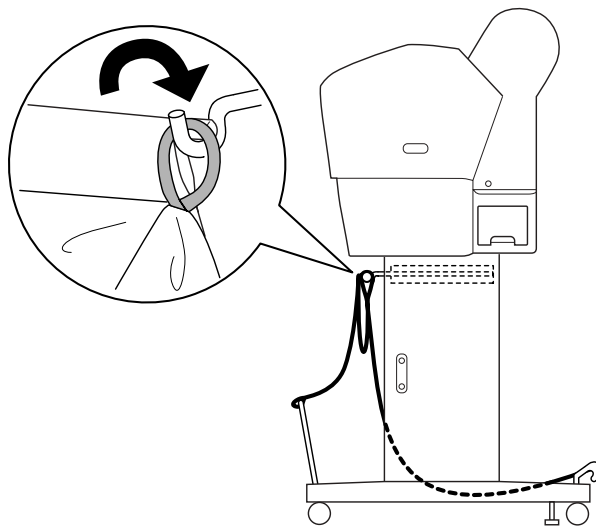
In the Unpacking and Assembling EPSON Stylus Pro 7800/7400 section of the *Unpacking and Setup Guide*, step 4 on page 11 has been changed as described below.

Step 4. Remove the polystyrene foam stoppers from the sides of the printer.



About the Basket Rings

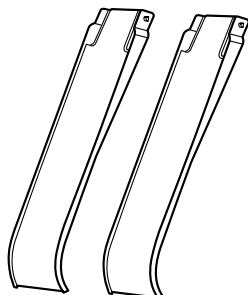
The shape of the basket rings has been changed as shown below.



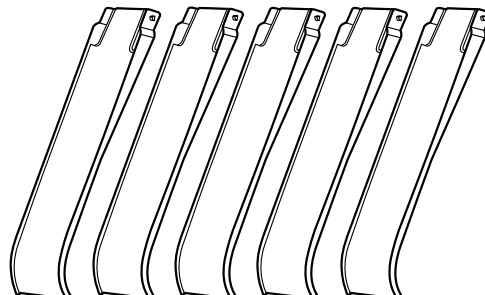
About the Paper Guides

The shape of the paper guides has been changed as shown below.

EPSON Stylus Pro 7800/7400

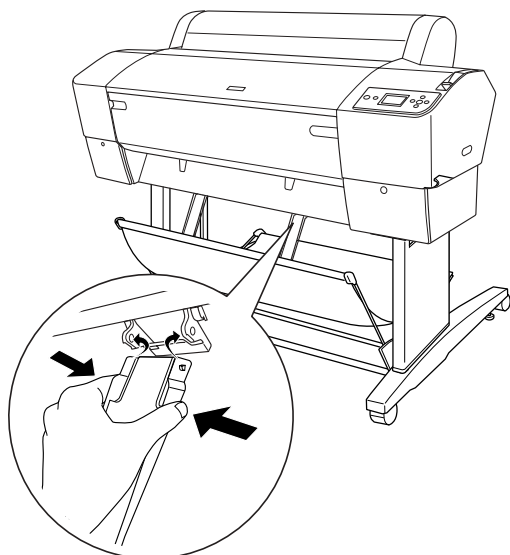


EPSON Stylus Pro 9800/9400

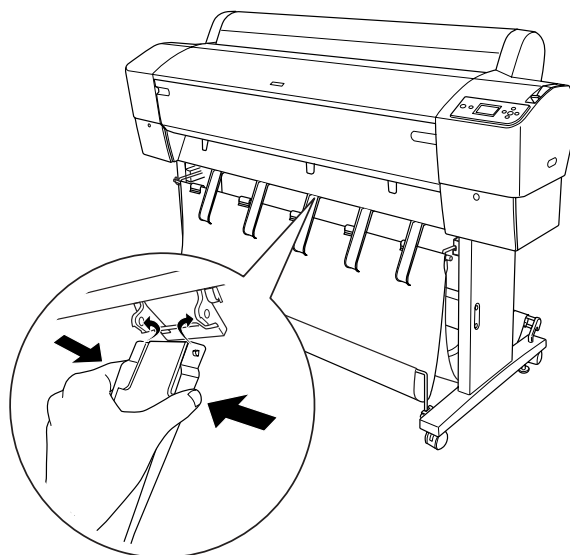


Attach the paper guides to the bottom of the printer as shown below, when you feed the paper forward or backward.

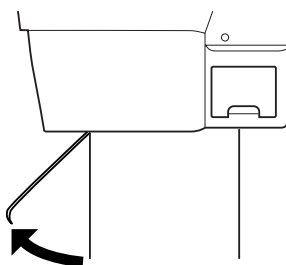
EPSON Stylus Pro 7800/7400



EPSON Stylus Pro 9800/9400

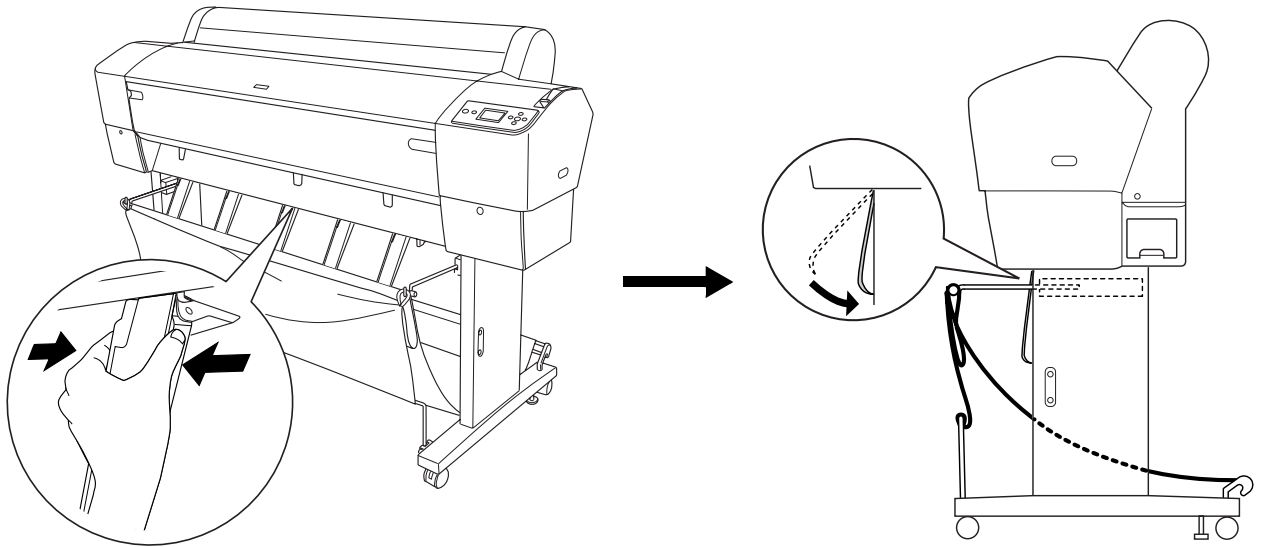


After attaching the paper guides, be sure to fix them in the forward position.



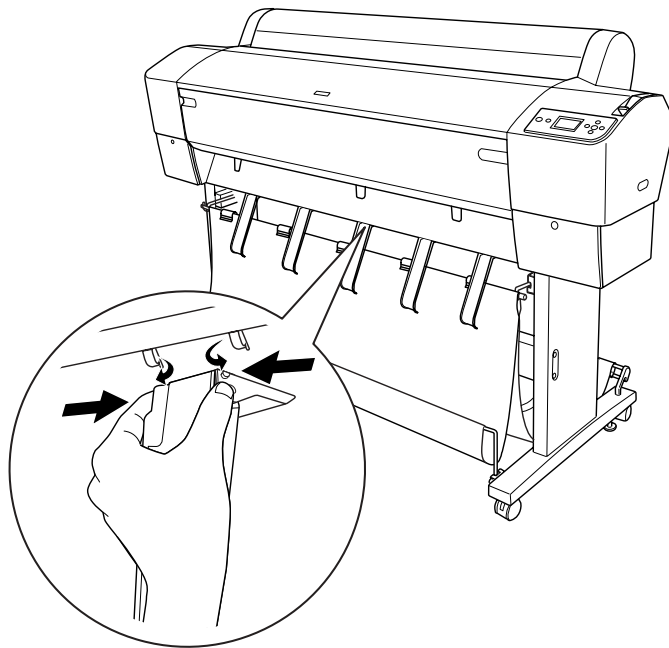
When Feeding Paper Backward

When you feed the roll paper backward, gently pinch the upper part of each paper guide and push it to the back position to allow the printout to come out properly.



When Using the Auto Take-up Reel Unit

To use the paper guides packaged with the Auto Take-up Reel Unit, first remove the paper guides and holders packaged with the printer, as shown below. Then attach the paper guides packaged with the Auto Take-up Reel Unit, taking care to space them evenly.



About CLEAR JOB HISTORY

The CLEAR JOB HISTORY function on the PRINTER STATUS menu, described in the Control Panel section of the *User's Guide*, is not supported.

About SHEET AUTO FEED TIME

The SHEET AUTO FEED TIME function described in the Maintenance Mode section of the *User's Guide*, is not supported.

About Transporting the Printer

If you transport the printer over a long distance, please note the following caution.



Caution:

Keep the printer horizontal when transporting it. Do not tilt or vibrate the printer; otherwise ink may leak from the ink cartridges or maintenance tank.

Loading Cut Sheet Media

Some information in the Paper Handling section of the *User's Guide* and in the Loading the Cut Sheet Media section of the *Unpacking and Setup Guide*, has been changed as described below.

To load A4, Letter or 8 × 10 inch cut sheet media, see “Loading cut sheet media with a size of A4, Letter or 8 × 10 inches” on page 6.

If you are printing on thick paper (0.5 to 1.5 mm), see “Printing on thick paper (0.5 to 1.5 mm)” on page 7.

Loading cut sheet media longer than A3 or Legal

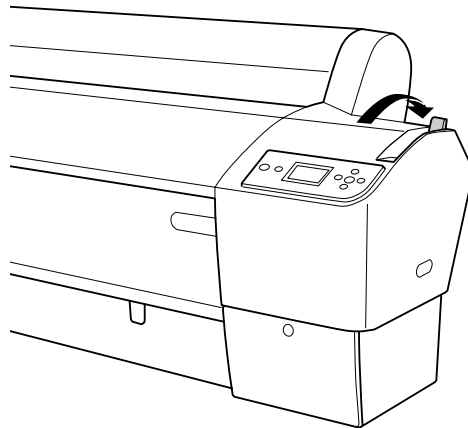
To load cut sheet media longer than A3 or Legal, follow the steps below.



Caution:

As much as possible, keep your fingers off the printable surface of the media, as fingerprints may reduce printout quality.

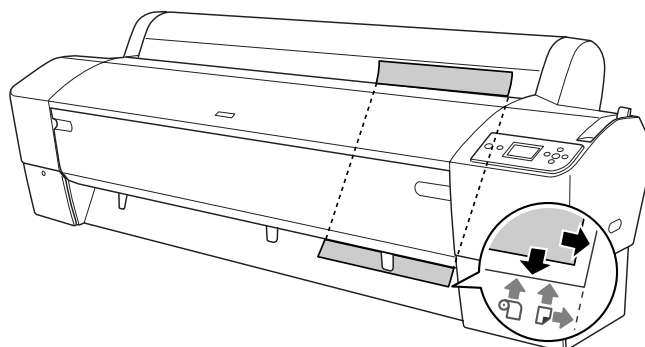
1. Make sure that the printer is on and the roll paper cover is closed.
2. Press the Paper Source ◀ button repeatedly until Sheet □ appears.
3. Make sure that the Power light is not flashing, and then set the paper lever to the released position. LEVER RELEASED. LOAD PAPER appears on the LCD panel.



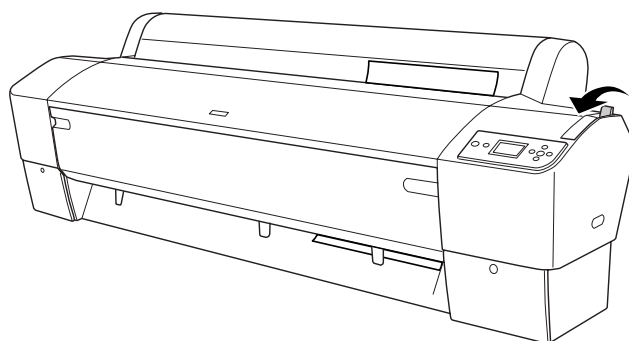
Caution:

Do not set the paper lever to the released position while the Power light is flashing; otherwise, damage may occur.

4. Load the sheet into the paper insertion slot until it comes out below. Make sure that the right and bottom edges of the sheet are straight and in line with the horizontal line and the vertical line.



5. Set the paper lever to the secured position. **PRESS PAUSE BUTTON** appears on the LCD panel.



6. Press the Pause **||** button.

The print heads move and the sheet feeds into the printing position automatically. **READY** appears on the LCD panel.

Now the printer is ready to print. While the printer is printing, do not open the front cover. If the front cover is opened while printing is in progress, the printer stops printing, and then restarts printing when the front cover is closed. Stopping and restarting printing may reduce the print quality.



Caution:

Do not leave the paper in the printer for a long period of time; its quality will deteriorate. We recommend that you remove the paper from the printer after printing.

Loading cut sheet media with a size of A4, Letter or 8 × 10 inches

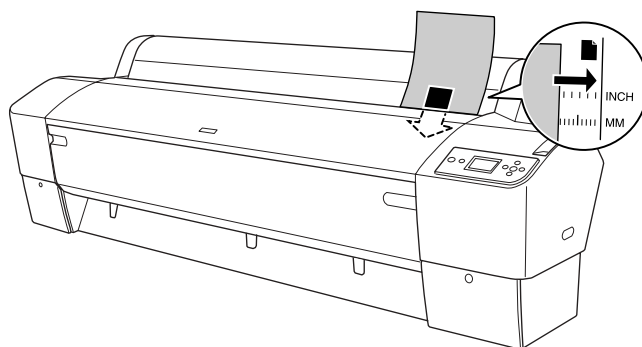
To load cut sheet media with a size of A4, Letter or 8 × 10 inches, follow the steps below.



Caution:

As much as possible, keep your fingers off the printable surface of the media, as fingerprints may reduce printout quality.

1. Make sure that the printer is on and the roll paper cover is closed.
2. Press the Paper Source **◀** button repeatedly until Sheet **□** appears.
3. Make sure that the paper lever is in the secured position, and then load the sheet into the paper insertion slot until it meets resistance. Make sure that the right edge of the paper is straight and in line with the right edge of the scale on the roll paper cover. **PRESS PAUSE BUTTON** appears on the LCD panel.



4. Press the Pause **||** button.

The print heads move and the sheet feeds into the printing position automatically. **READY** appears on the LCD panel.

Now the printer is ready to print. While the printer is printing, do not open the front cover. If the front cover is opened while printing is in progress, the printer stops printing, and then restarts printing when the front cover is closed. Stopping and restarting printing may reduce the print quality.

When printing is complete, the printer supports the printed media, and **PAPER OUT. LOAD PAPER** is displayed on the LCD panel. To remove the paper, press the **Paper Feed** button and then release the paper lever while holding the paper. The paper can be removed from the printer.




Caution:

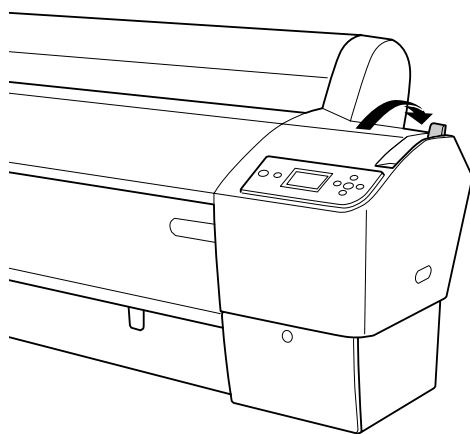
Do not leave the paper in the printer for a long period of time; its quality will deteriorate. We recommend that you remove the paper from the printer after printing.

Printing on thick paper (0.5 to 1.5 mm)

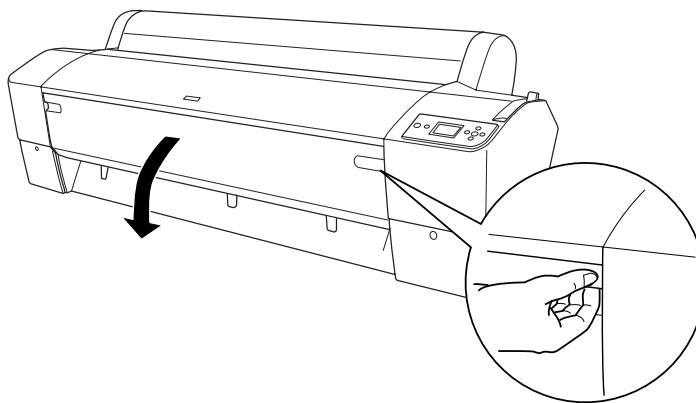
When you load thick cut sheets, such as cardboard, follow the steps below.

Note:

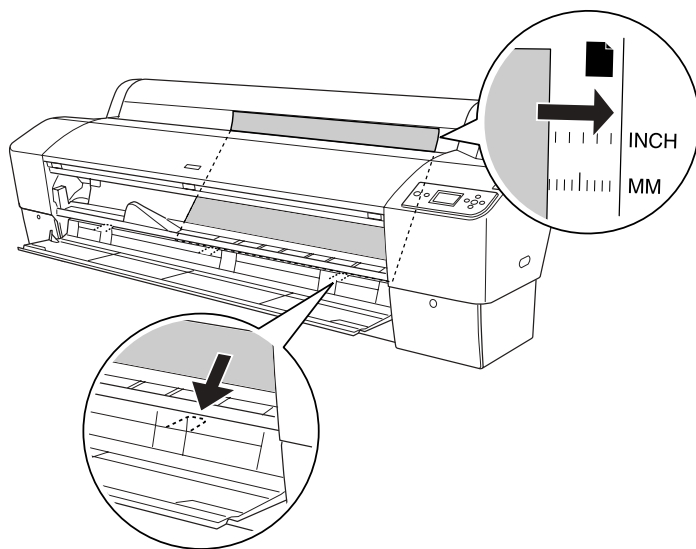
- Do not load thick paper larger in size than B1 (728 × 1030 mm); otherwise, paper jams may occur.
 - Always load B1 (728 × 1030 mm) sized thick paper long edge first. You may want to select the *Landscape* setting in your printer driver.
1. Set the paper basket forward as described in “When feeding paper forward (Roll Paper Banner 1580 mm or more); thick [0.5 mm or more] cut sheet” in the *User’ Guide*.
 2. Make sure that the printer is on.
 3. Press the Paper Source **◀** button repeatedly until **Sheet**  appears.
 4. Make sure that the Power light is not flashing, and then set the paper lever to the released position. **LEVER RELEASED. LOAD PAPER** appears on the LCD panel.



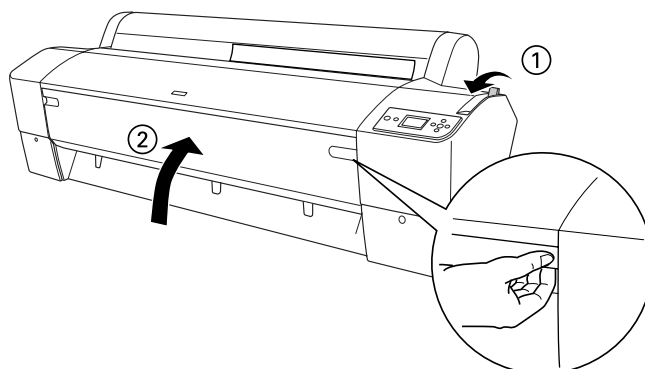
5. Open the front cover.




6. Load the sheet into the paper insertion slot so that the bottom edge of the paper rests behind the open front cover. Make sure that the right and bottom edges of the sheet are straight and in line with the horizontal line and the vertical line.



7. Set the paper lever to the secured position, and then close the front cover. **PRESS PAUSE BUTTON** appears on the LCD panel.



8. Press the Pause  button, and then follow the same procedure used for other cut sheet media.



Caution:

Do not leave the paper in the printer for a long period of time; its quality will deteriorate. We recommend that you remove the paper from the printer after printing.